



The Review

NBIMC News, Updates, & Announcements

November 2023

INSIDE

HIV Information

Updates

Frequently Asked Questions

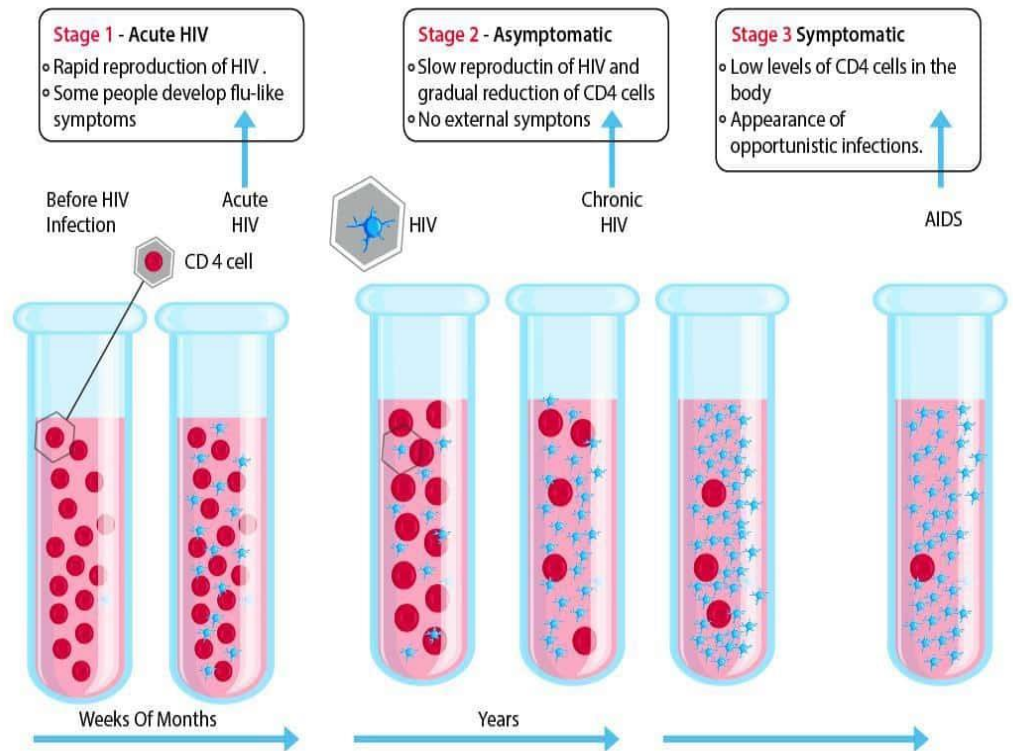
Thanksgiving Day Holiday

Announcements

FAQ - Question

Discards

Source: NIH (2021) [The Stages of HIV Infection | NIH](#)



NBIMC is located on the NSA Bethesda campus in Bldg. 17B.

Hours: 6 a.m. to 5 p.m.

Phone: 301-295-6590

E-mail:

dha.bethesda

wrrnmmc.mbx.nbimc@health.mil

Department Head

Phone: 301-295-6590

Bldg. 17B, 3rd floor, Suite 3G.

Summary of HIV Progression

Written by: LaKeisha Jones, MSHS, MLS(AMT)

Periodic HIV testing helps with early detection of infection and early treatment.

There are **three stages** of HIV infection:

- 1) Acute HIV infection – the early stage, develops 2-4 weeks after infection, high levels of HIV and multiplies rapidly.
- 2) Chronic HIV Infection – Clinical HIV infection; HIV multiplies at low levels, may be asymptomatic, and risk of transmission depends on treatment and viral loads. and
- 3) Acquired Immunodeficiency Syndrome (AIDS) – Severe stage of infection, susceptible to opportunistic infections, high viral load, and easily transmit to others.



Recent Updates

Frequently Asked Questions

My site received an email for Specimens about to be discarded. Batch #: DODHML-A1021-3144 (06/21/21) have been transmitted. What is the status of the tests?

In order to research the status of specific orders and specimens, sites **must** send/email the barcode numbers and your site UIC with your request. The testing lab does not receive any batch information only the barcode number. NBIMC will forward this information to CDD for their knowledge.

Have questions regarding the NBIMC program?

[Service Offerings](#)

[Key Resources](#)

[Contact Us](#)

Upcoming Holiday – November 23rd

The next observed federal holiday is Thursday, November 23rd. CDD **will be CLOSED**. CDD recommends sites to not ship on Wednesday since the samples will sit at a FedEx hub for a full day. We will reopen on Friday for testing.

If you have any questions, please contact CDD at: 877.233.1337 or email: Military@cddmedical.com

DEFICIENCY AWARENESS

DISCARDS

“Specimens Discarded”

DEFINITION:

For most of the affected sites, this is the final email indicating that no corrections were made within deficiency guidelines and the specimens were discarded and/or that the specimens were sent with uncorrectable errors (such as hemolyzed specimens, horizontal barcodes on tubes etc.).

Codes

D4 Barcode label cut off, too dark, wrinkled, unscannable.

D5 Discrepancy exists between the information on the tube and the order information.

D6 Specimen submitted without identification and/or accompanying labels (name, barcode).

D7 The specimen condition unable to test Hemolysis, Lipemia, etc.

D8 Quantity Not Sufficient

D9 Individual Specimen Contamination or Gross Leakage

ACTION:

Site needs to redraw patient.

Contact CDD at: 877.233.1337
or email:

Military@cddmedical.com

For more questions,
Please visit the
NBIMC website [here](#)