

Quarterly PDHRA (DD2900) Health Screen Report, CY 2018 Quarter 4

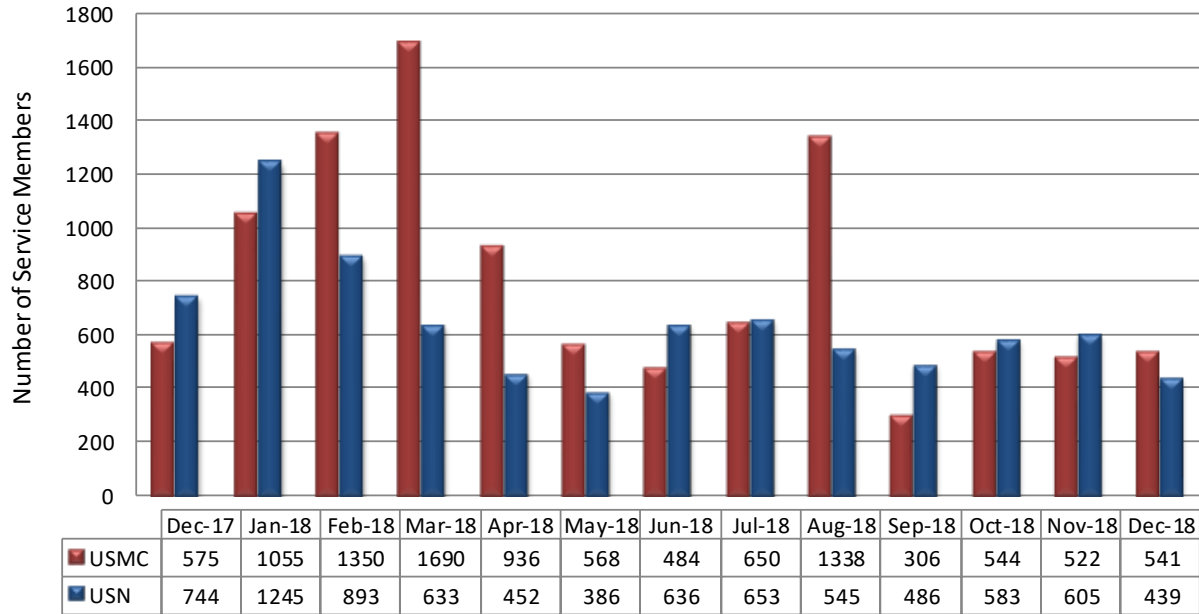
Overall Assessment

This calendar year (CY) quarterly report tracks major areas of concern as related to the EpiData Center Department by previous short-term reports, the media, and leadership requests by members and providers on the Post Deployment Health Reassessment (PDHRA). The report is generated for United States Navy (USN) and United States Marine Corps (USMC) service members by service component. The areas of focus are post-traumatic stress disorder (PTSD), major depressive disorder (MDD), alcohol use disorder, and suicide/homicide ideation. The report also highlights positive self-screens and referrals in all focused areas of behavioral health conditions.

Figure 1 shows the number of service members who had a certified PDHRA from December 2017 through December 2018. The number of PDHRAs completed by USMC service members decreased by 29.9% from Q3 (N= 2,294) to Q4 (N=1,607). The highest and lowest number of PDHRAs completed by USMC service members was identified in March 2018 (N=1,690) and September 2018 (N=306), respectively. The number of PDHRAs completed by USN service members decreased by 3.4% from Q3 (N=1,684) to Q4 (N=1,627). The highest and lowest number of PDHRAs completed by USN service members was identified in January 2018 (N=1,245) and May 2018 (N=386), respectively.



Figure 1. Number of Service Members Screened on the PDHRA, USMC & USN, December 2017 - December 2018



Prepared by EpiData Center Department, NMCPHC on 24 January 2019.

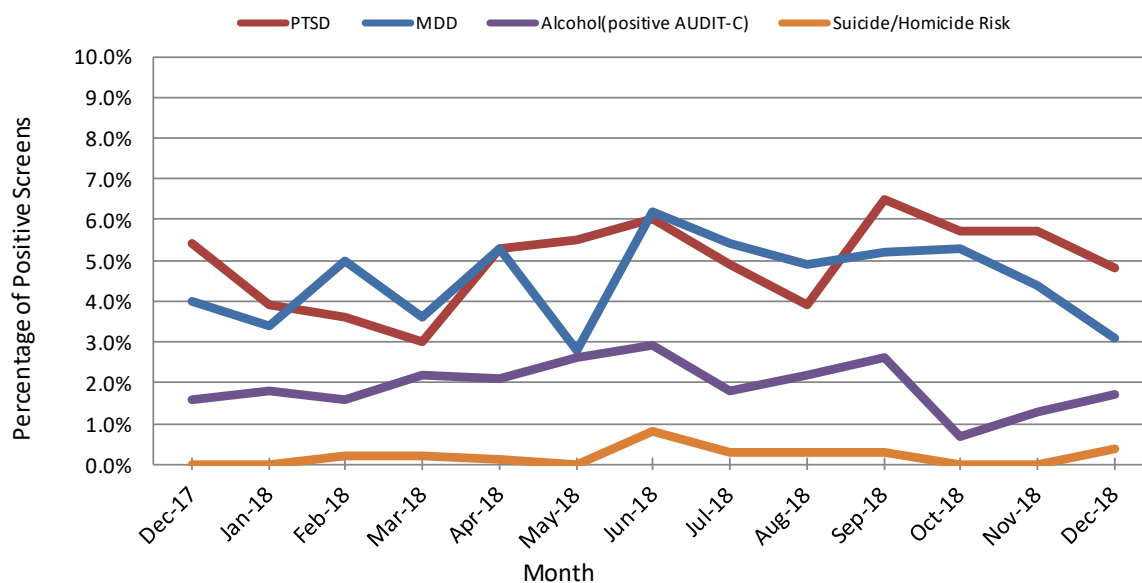
Data Source: eDHA PDHRA (DD2900)



USMC

Figure 2 shows the percentage of positive screens (see Methods section) for USMC service members for the four behavioral health conditions of interest: PTSD, MDD, alcohol use disorder, and suicide/homicidal risk. Throughout the 13-month reporting period, PTSD and MDD were consistently the most self-reported positive screens. The percentages of positive screens for PTSD and MDD decreased from October to December 2018. Alcohol use disorder increased from October (0.7%) to December 2018 (1.7%). Throughout the reporting period, the percentage of positive screens for suicide/homicide risk remained stable and below 0.9%. None of the observed changes were statistically significant.

Figure 2. PDHRA Positive Screens in USMC, December 2017 - December 2018



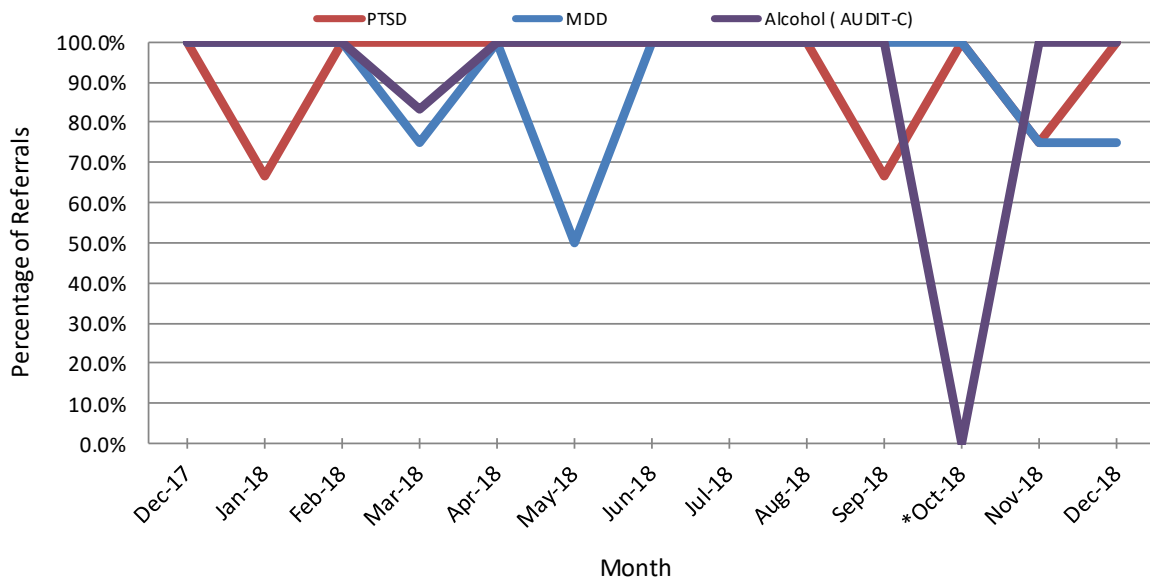
Prepared by EpiData Center Department, NMCPHC on 24 January 2019.

Data Source: eDHA PDHRA (DD2900)



Figure 3 below shows the percentages of referrals made for USMC service members who self-screened positive and had provider indicated concern for each of the three selected behavioral health conditions: PTSD, MDD, and alcohol use disorder. There were no referrals for alcohol use disorder in October 2018 and the percentages for all behavioral health conditions remained at 50.0% or above throughout the 13-month time period.

Figure 3. PDHRA Referrals in USMC, December 2017 - December 2018



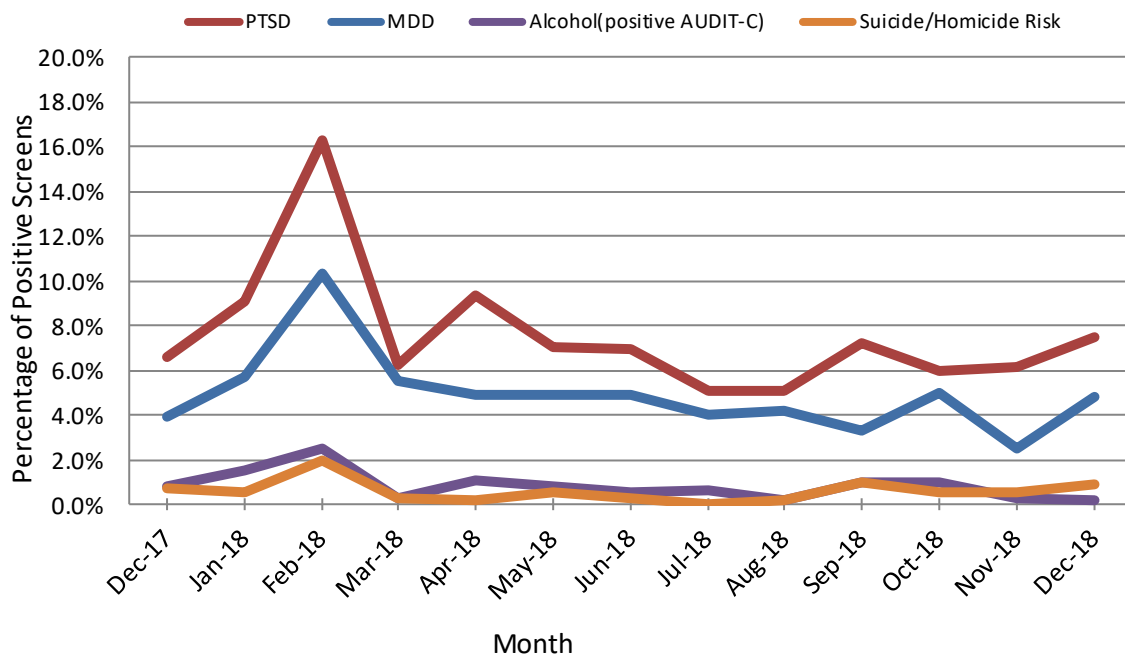
Prepared by EpiData Center Department, NMCPHC on 24 January 2019.
 Data Source: eDHA PDHRA (DD2900)



USN

Figure 4 below shows the percentage of positive screens for USN service members for the four behavioral health conditions of interest: PTSD, MDD, alcohol use disorder, and suicide/homicidal risk. Throughout the 13-month reporting period, PTSD was consistently the most self-reported concern, followed by MDD. The percentages of positive screens for PTSD increased from October (6.0%) to December 2018 (7.5%), and screens for MDD decreased from October (5.0%) to November (2.5%) before increasing in December 2018 (4.8%). Throughout the fourth quarter the percentage of positive screens for alcohol use disorder and suicide/homicide risk remained stable and below 1.8%.

Figure 4. PDHRA Positive Screens in USN, December 2017 - December 2018



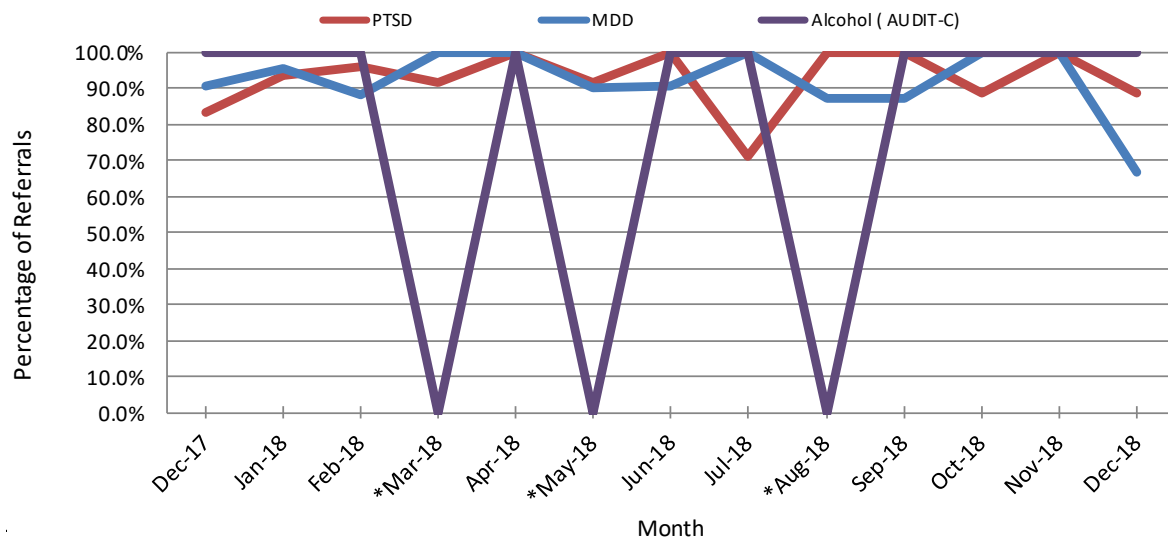
Prepared by EpiData Center Department, NMCPHC on 24 January 2019.

Data Source: eDHA PDHRA (DD2900)



Figure 5 below shows the percentages of referrals made for USN service members who self-screened positive and had provider indicated concern for each of the three selected behavioral health conditions: PTSD, MDD, and Alcohol use disorder. Throughout the report period, the percentages of referrals for MDD and PTSD remained above 67%. There were no referrals for alcohol use disorder in March, May and August 2018 and alcohol use disorder remained at 100% from September to December 2018.

Figure 5. PDHRA Referrals in USN, December 2017 - December 2018



*No service members self-screened positive and had provider indicated concern for at least one of the four behavioral health conditions; therefore, none were eligible for a referral.

Prepared by EpiData Center Department, NMCPHC on 24 January 2019.

Data Source: eDHA PDHRA (DD2900)



EpiData Center Department
 PDHRA Quarterly Health Screen Report
 NMCPHC-EDC-TR-048-2019
 Prepared 24 January 2019

DON Quarterly Screening Report PDHRA (DD2900). CY 2018 Quarter 4

Table 1. Post-Traumatic Stress Disorder (PTSD) Screen CY 2018 Q4

Service Branch	Service Component	Number of Service Members Screened	Number of PDHRA with positive screen for PTSD symptoms	% of total with positive screen	Number of PDHRA that have positive PTSD self screen and provider concern for PTSD	% of positive screen with provider concern	Number of PDHRA that had a positive screen and provider concern with a referral	% of combined group with a referral *	Number of PDHRA that had a positive screen and provider concern with no referral	% of combined group with no referral	Number of PDHRA that have positive PTSD self screen and provider concern already under care	% of combined group already under care
USMC	Active Duty	1,768	97	5.5%	16	16.5%	13	81.3%	3	18.8%	1	6.3%
	Reserve	145	10	6.9%	3	30.0%	3	100.0%	0	0.0%	0	0.0%
	Other/Unknown	0	0	0.0%	0	0.0%	0	0.0%	0	0.0%	0	0.0%
	Total	1,913	107	5.6%	19	17.8%	16	84.2%	3	15.8%	1	5.3%
USN	Active Duty	1,299	79	6.1%	17	21.5%	17	100.0%	0	0.0%	3	17.6%
	Reserve	806	61	7.6%	37	60.7%	34	91.9%	3	8.1%	2	5.4%
	Other/Unknown	8	0	0.0%	0	0.0%	0	0.0%	0	0.0%	0	0.0%
	Total	2,113	140	6.6%	54	0.0%	51	94.4%	3	5.6%	5	9.3%

* Combined group refers to positive screens and provider concern

Table 2. Depression Screen (PHQ-2) CY 2018 Q4

Service Branch	Service Component	Number of Service Members Screened	Number of PDHRA with a PHQ2 score of 2 or greater	% of total with PHQ2 Score of 2 or greater	Number of PDHRA that have PHQ2 Score of 2+ and provider concern for Depression	% of positive screen with provider concern	Number of PDHRA that had a positive screen and provider concern with a referral	% of combined group with a referral *	Number of PDHRA that had a positive screen and provider concern with no referral	% of combined group with no referral	Number of PDHRA that have positive screen and provider concern already under care	% of combined group already under care
USMC	Active Duty	1,768	80	4.5%	14	17.5%	12	85.7%	2	14.3%	2	14.3%
	Reserve	145	5	3.4%	1	20.0%	1	100.0%	0	0.0%	0	0.0%
	Other/Unknown	0	0	0.0%	0	0.0%	0	0.0%	0	0.0%	0	0.0%
	Total	1,913	85	4.4%	15	17.6%	13	86.7%	2	13.3%	2	13.3%
USN	Active Duty	1,299	48	3.7%	7	14.6%	5	71.4%	2	28.6%	4	57.1%
	Reserve	806	33	4.1%	22	66.7%	21	95.5%	1	4.5%	2	9.1%
	Other/Unknown	8	0	0.0%	0	0.0%	0	0.0%	0	0.0%	0	0.0%
	Total	2,113	81	3.8%	29	35.8%	26	89.7%	3	10.3%	6	20.7%

* Combined group refers to positive screens and provider concern

Table 3. Alcohol Screen (taken from AUDIT-C) CY 2018 Q4

Service Branch	Service Component	Number of Service Members Screened	Number of PDHRA with positive AUDIT-C screen	% of total with positive screen	Number of PDHRA that have positive AUDIT-C screen and provider concern for Alcohol Use	% of positive screen with provider concern	Number of PDHRA that had either a positive AUDIT-C screen and provider concern with a referral	% of combined group with a referral *	Number of PDHRA that had positive AUDIT-C screen and provider concern with no referral	% of combined group with no referral	Number of PDHRA that have positive AUDIT-C screen and provider concern already under care	% of combined group already under care
USMC	Active Duty	1,768	25	1.4%	10	40.0%	10	100.0%	0	0.0%	0	0.0%
	Reserve	145	3	2.1%	1	0.0%	1	0.0%	0	0.0%	0	0.0%
	Other/Unknown	0	0	0.0%	0	0.0%	0	0.0%	0	0.0%	0	0.0%
	Total	1,913	28	1.5%	11	39.3%	11	100.0%	0	0.0%	0	0.0%
USN	Active Duty	1,299	7	0.5%	2	28.6%	2	100.0%	0	0.0%	0	0.0%
	Reserve	806	7	0.9%	5	71.4%	5	100.0%	0	0.0%	0	0.0%
	Other/Unknown	8	0	0.0%	0	0.0%	0	0.0%	0	0.0%	0	0.0%
	Total	2,113	14	0.7%	7	50.0%	7	100.0%	0	0.0%	0	0.0%

* Combined group refers to positive screens and provider concern



EpiData Center Department
 PDHRA Quarterly Health Screen Report
 NMCPHC-EDC-TR-048-2019
 Prepared 24 January 2019

Table 4. Suicide/Homicide Risk Screen CY 2018 Q4

Service Branch	Service Component	Number of Service Members Screened	Number of PDHRA with positive screen for suicidal/homicidal risk	% of total with positive screen	Number of PDHRA with positive screen for suicide/homicide risk and provider endorsing current risk to self or others	% of positive screen with provider concern
USMC	Active Duty	1,768	3	0.2%	3	100.0%
	Reserve	145	0	0.0%	0	0.0%
	Other/Unknown	0	0	0.0%	0	0.0%
	Total	1,913	3	0.2%	3	100.0%
USN	Active Duty	1,299	4	0.3%	4	100.0%
	Reserve	806	11	1.4%	11	0.0%
	Other/Unknown	8	0	0.0%	0	0.0%
	Total	2,113	15	0.7%	15	100.0%



Methods

The electronic Deployment Health Assessment (eDHA) database was used to identify PDHRAs that were provider certified during the report quarter. Using this methodology, a member may have multiple forms included in the quarterly report, if they completed multiple forms with different provider certified dates. Each area of interest has a self-reported section, a provider report section, and a referral section. If a member is already under care, said member will only be counted in the “under care” column regardless of referral status. The following paragraphs explain how screening results in each of the five selected behavioral health conditions were calculated for each version of the assessment. Screening result criteria were defined using literature reviews and authors own validated scoring system on the screens. Please contact the EpiData Center for more information.

PDHRA Version 3

Post-Traumatic Stress Disorder (PTSD):

- A positive screen for self-reported PTSD was calculated using question 13 in the self-report section. Question 13 is identified as the Primary Care PTSD Screen (PC-PTSD) and is said to be endorsed if a member answers at least two of the four questions ‘Yes’.
- Question 16f and 9c on the provider section was used to identify possible concern for PTSD and whether a member was already under professional care for PTSD respectively.
- Referrals for PTSD include the following categories from question 17 on the provider section: behavioral health, mental health and substance abuse.

Traumatic Brain Injury (TBI):

- TBI related questions are not included on PDHRA version 3 form.

Depression (MDD):

- Question 14 of the self-report section is the Patient Health Questionnaire 2 questions (PHQ2) for depression. Each question assessed depressive symptoms and was scored on a 0-3 level. If either question was answered with a 2 (‘More than half the days’) or 3 (‘Nearly every day’) it was considered a positive self-reported depression screen.
- Question 19g and 10c on the provider section was used to identify possible concern for depression and whether a member was already under professional care for depression respectively.
- Referrals for depression include the following categories from question 17 on the provider section: behavioral health, mental health and substance abuse.



Alcohol Dependence (AUDIT-C):

- Question 12a – 12c is the shorter version of the Alcohol Use Disorders Identification Test (AUDIT), known as the AUDIT alcohol consumption questions (AUDIT-C). Questions 12a and 12c are tallied (0 – 4) and question 12b is tallied (1-5). The tallied questions are then summed to calculate the overall score. A score of at least 8 is defined as an endorsed screen needing a referral.
- Question 17e and 8b on the provider section was used to identify possible concern for alcohol dependence and whether a member was already under professional care for alcohol dependence respectively.
- Referrals for alcohol dependence include the following categories from question 17 on the provider section: behavioral health, mental health, substance abuse. Also included is question 8b on the provider form where the provider can directly refer a suspected alcohol problem.

Suicide/Homicide Ideation:

- While there is no specific self-reported question for suicide/homicide ideation on the PDHRA, question 13 of the provider section was used to identify potential risk to self and others.
- Question 14 of the provider section assesses the risk of self-harm or violence conveyed by the service members.
- Question 16i and 16j on the provider section was used to identify possible concern for suicide/homicide ideation.

Tables 1, 2&3 Interpretation

- Number of service members screened (**Column 3**): the number of service members with the most recent PDHRA form that was provider certified in the report quarter.
- Positive screen (**Column 4**): represents the number of service members that met the case definition of a positive screen for the behavioral health condition.
- Percentage of total with positive screens (**Column 5**): this is the number of positive screens for the behavioral health condition, divided by the number of service members screened, multiplied by 100.
- Positive screen and provider concern (**Column 6**): the number of service members that screened positive and provider indicated concern for the condition.



- Percentage of positive screen and provider concern (**Column 7**): the number of positive screens and provider concern, divided by the number of service members that screened positive for the condition, multiplied by 100.
- Number of positive screens and provider concerns with a referral (**Column 8**): referrals among those who screened positive and provider indicated concern for the condition.
- Percentage of referrals (**Column 9**): referrals among those who screened positive and provider indicated concern for the condition, divided by the number of service members who screened positive and provider indicated concern for the condition, multiplied by 100.
- Combined groups with no referrals (**Column 10**): service members who screened positive and provider indicated concern for condition but were not referred.
- Percentage of combined groups with no referrals (**Column 11**): service members who screened positive and provider indicated concern but were not referred, divided by the number of service members who screened positive and provider indicated concern, multiplied by 100.
- Combined group under care (**Column 12**): number of service members who screened positive and provider indicated concern for the behavioral health condition, but are already under care.
- Percentage under care (**Column 13**): combined group under care divided by the number service members who screened positive and provider indicated concern for the condition, multiplied by 100.

Table 4 Interpretation

- Number of service members screened (**Column 3**): the number of service members with the most recent PDHRA form that was provider certified in the report quarter.
- Positive screen (**Column 4**): represents the number of service members that met the case definition of a positive screen for suicide/homicide risk.
- Percentage of total with positive screens (**Column 5**): this is the number of positive screens for suicide/homicide risk, divided by the number of service members screened, multiplied by 100.
- Positive screen and provider concern (**Column 6**): the number of service members that screened positive for suicide/homicide risk and provider indicated member's current risk to self and others.
- Percentage of positive screen and provider concern (**Column 7**): the number of positive screens and provider concern, divided by the number of service members that screened positive for suicide/homicide risk, multiplied by 100.

