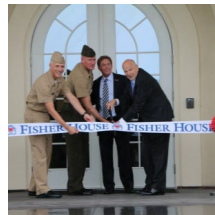
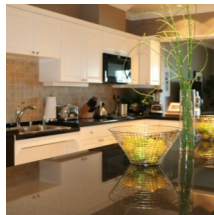
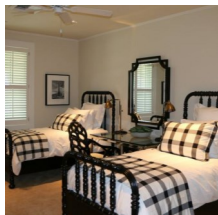




# FISHER HOUSE, CAMP PENDLETON

Bldg 2014, San Jacinto Road, Oceanside, CA 92058 Tel: 760-763-5307, 760-763-5308

## YOUR HOME AWAY FROM HOME



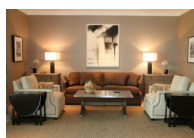
The Fisher House provides a "home away from home" at no cost for families of patients admitted for medical care at the Naval Hospital Camp Pendleton or affiliated medical centers. The Fisher House represents the commitment to provide quality care and support to our guests during a time of need. We offer comfortably furnished rooms with bathrooms, fully equipped kitchen, living, dining, laundry and play rooms. We are located in close proximity to Naval Hospital Camp Pendleton.

## Guest Amenities



Spacious guest rooms furnished with TV, DVD player, Phone, Iron/Ironing board, hair dryer  
High speed wireless internet access throughout the entire facility  
Fully equipped kitchen  
Laundry facility  
Dining, living, family and play rooms  
Pack-N-Play available upon request  
Entirely non-smoking facility

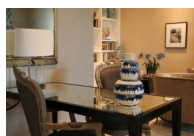
## Guest Eligibility



Fisher House is available to families of active duty, retired and veterans from all services including the National Guard and Coast Guard  
Family must be traveling a minimum distance of 40 miles one way  
Lodging is available to families who have no local accommodations  
Patient's condition must be serious in nature and not diagnostic testing, general, or elective procedures

Families are required to check out when the patient is discharged to Med-Hold

## Availability and Placement



A referral must be completed in advance of arrival and submitted to the Fisher House. However, advance referrals do not constitute a reservation. The Fisher House operates on a day-to-day basis due to the medical needs of our guests and their families. A Fisher House staff member will contact the family regarding availability of lodging.

## Referral Procedure

Physicians, Nurses, Chaplains, Military Liaisons, Social Workers, American Red Cross, Case Managers, Patient Administration, may prepare referrals. Fisher House Referral Form may be emailed to [kiana.bright@usmc.mil](mailto:kiana.bright@usmc.mil)

## Admittance Guidelines



Due to priority and urgent medical needs, it is not always possible to admit families on a first come first serve basis. The following factors are taken into consideration:

Medical Condition-Terminal, Critical, Serious (Not for elective procedures)

Financial - Junior personnel have priority

Status - Active duty personnel have priority

Patients are not eligible to stay at the Fisher House without a caregiver

Each family will be assigned one guest room

Once eligibility and availability is confirmed, the family will be contacted by the Fisher House staff when a room is available

A family may be admitted after business hours if prior arrangements have been made with the Fisher House staff

Contact Us

### Fisher House Camp Pendleton

Bldg 2014, San Jacinto Road, Oceanside, CA 92058

Tel: 760-763-5307, 760-763-5308 Email: [kiana.bright@usmc.mil](mailto:kiana.bright@usmc.mil)

Hours of Operation: Monday– Friday 0800-1600